

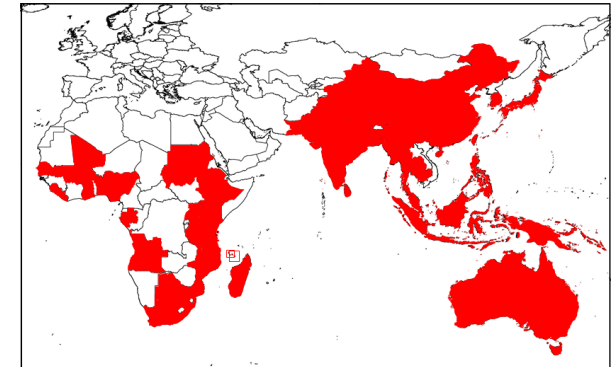
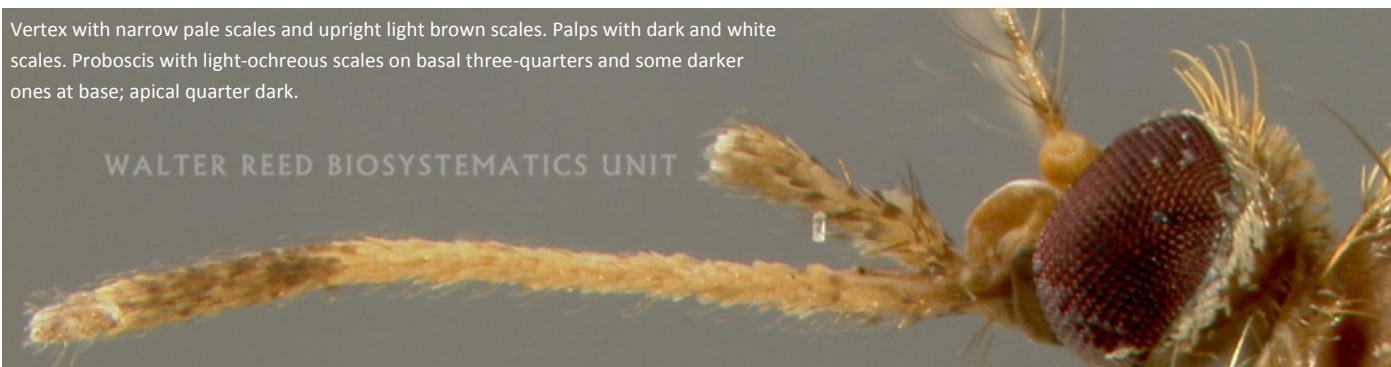
*Mansonia (Mansonioides) uniformis* (Theobald), WRBU specimen MAuni, Character descriptions: Edwards, 1941:105

Thorax. Posterior pronotum with pale narrow scales. Postspiracular area with 10-15 setae. Sternopleuron and mesepimeron each with a large patch of broad white scales; usually 5 lower mesepimeral bristles.

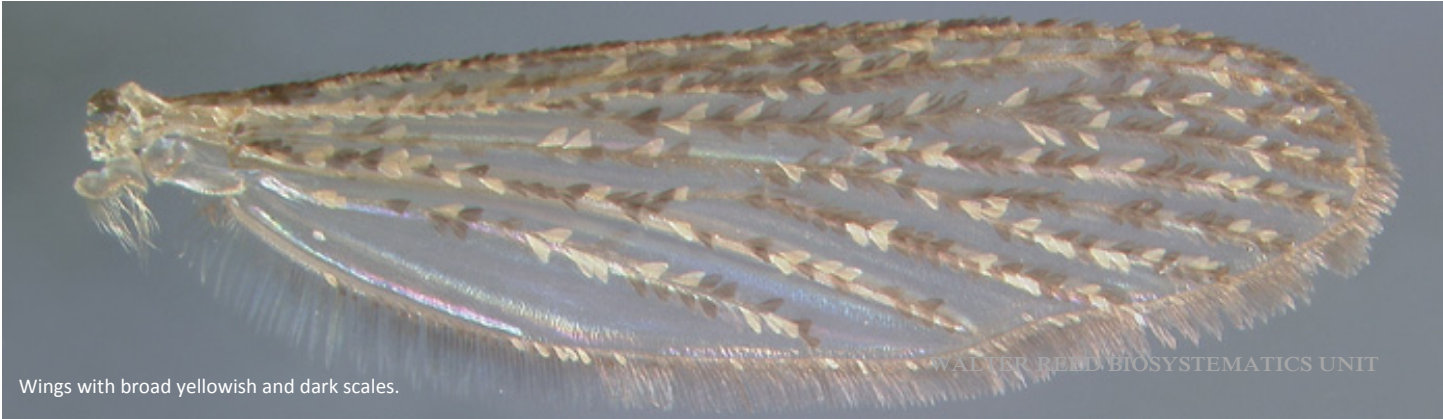


Thorax. Integument light brown. Scutum clothed with golden scales; some silvery scales on shoulders, on fossa, in front of wing roots and round bare area.

Vertex with narrow pale scales and upright light brown scales. Palps with dark and white scales. Proboscis with light-ochreous scales on basal three-quarters and some darker ones at base; apical quarter dark.



*Mansonia (Mansonioides) uniformis* (Theobald), WRBU specimen MAuni, Character descriptions: Edwards, 1941:105



Wings with broad yellowish and dark scales.

WALTER REED BIOSYSTEMATICS UNIT

Male head.

No Photo Available



Tergites with dark ochreous scales, and white lateral patches.

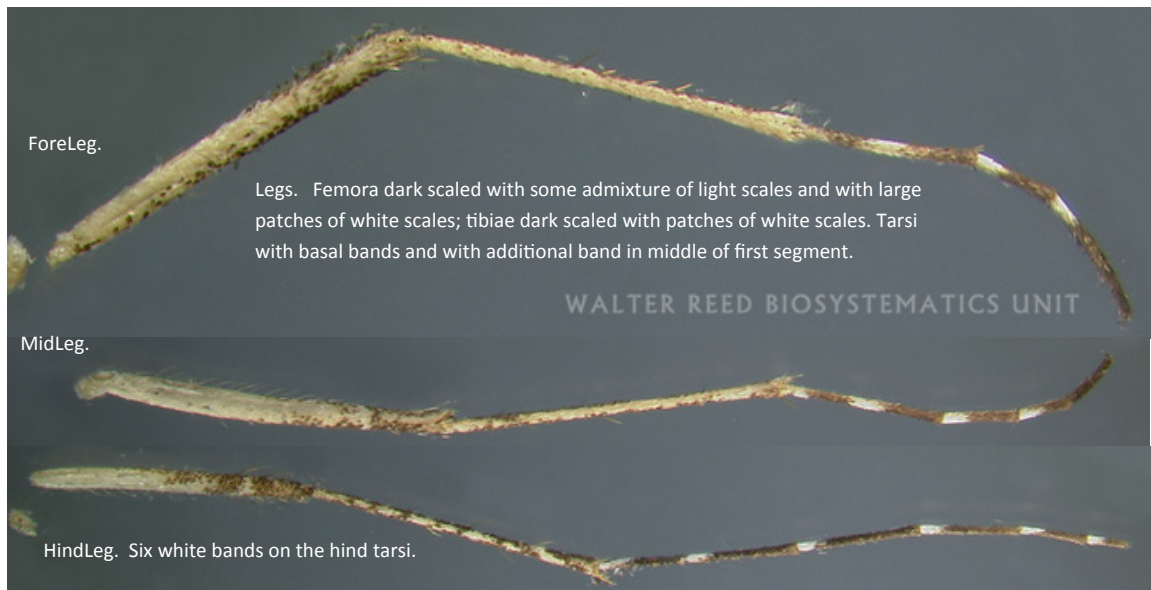
WALTER REED BIOSYSTEMATICS UNIT



WALTER REED BIOSYSTEMATICS UNIT

**Bionomics:** Larvae are found in open swamp unshaded by trees. Larvae use specially modified siphons to pierce stems and roots of aquatic vegetation to obtain air. Females are crepuscular and prefer cattle, but will readily feed on man (Wharton, 1962).

**Medical Importance:** Vector of *W. malayi* (Wharton, 1962).



ForeLeg.

Legs. Femora dark scaled with some admixture of light scales and with large patches of white scales; tibiae dark scaled with patches of white scales. Tarsi with basal bands and with additional band in middle of first segment.

MidLeg.

HindLeg. Six white bands on the hind tarsi.

WALTER REED BIOSYSTEMATICS UNIT